



BT Global Banking and Financial Markets

Using digital channels to communicate securely with customers

Chris Pickles
Head of Industry Initiatives
19 October 2011

Opening up to the digital world outside

- Managed Firewalls
 - Protecting your organisation from its perimeter where it meets the internet
- Intrusion Prevention
 - Recognising inbound threats, triggering alerts, stopping intruders
- Web Security
 - Dynamic URL filtering, web site classification, time and bandwidth limitation
- Messaging Application Security
 - Inspecting and filtering traffic, message encryption, email archiving for compliance
- Denial of Service (DDoS) Mitigation
 - Detect, alert and divert
- PCI-DSS
 - BT Cardway for payment message aggregation and routing
 - Thistle

Knowing who is who - URU

- Verifying people within your organisation
- Verifying the people outside your organisation
- Reducing paper-based application processing costs
- URU
 - BT in collaboration with GB Group plc
 - Robust, comprehensive, accurate and up-to-date reference data
 - Standardised and objective identity checking procedures
 - Seamless integration with internal processing and CRM systems
 - Takes seconds – not days or weeks
- BT Managed Fraud Reduction Service
 - Uses URU
 - Works in collaboration with existing fraud tools, eg Verified by Visa, MasterCard SecureCode, Address Verification Service, CVV checks

“URU’s ‘straight through’ processing power provides an ID verification decision in seconds. In short we are able to transform account opening, offering increased speed to market for new investors.”

Gavin Dufton, Senior Business Analyst, TD Waterhouse UK

Exchanging documents securely and reliably

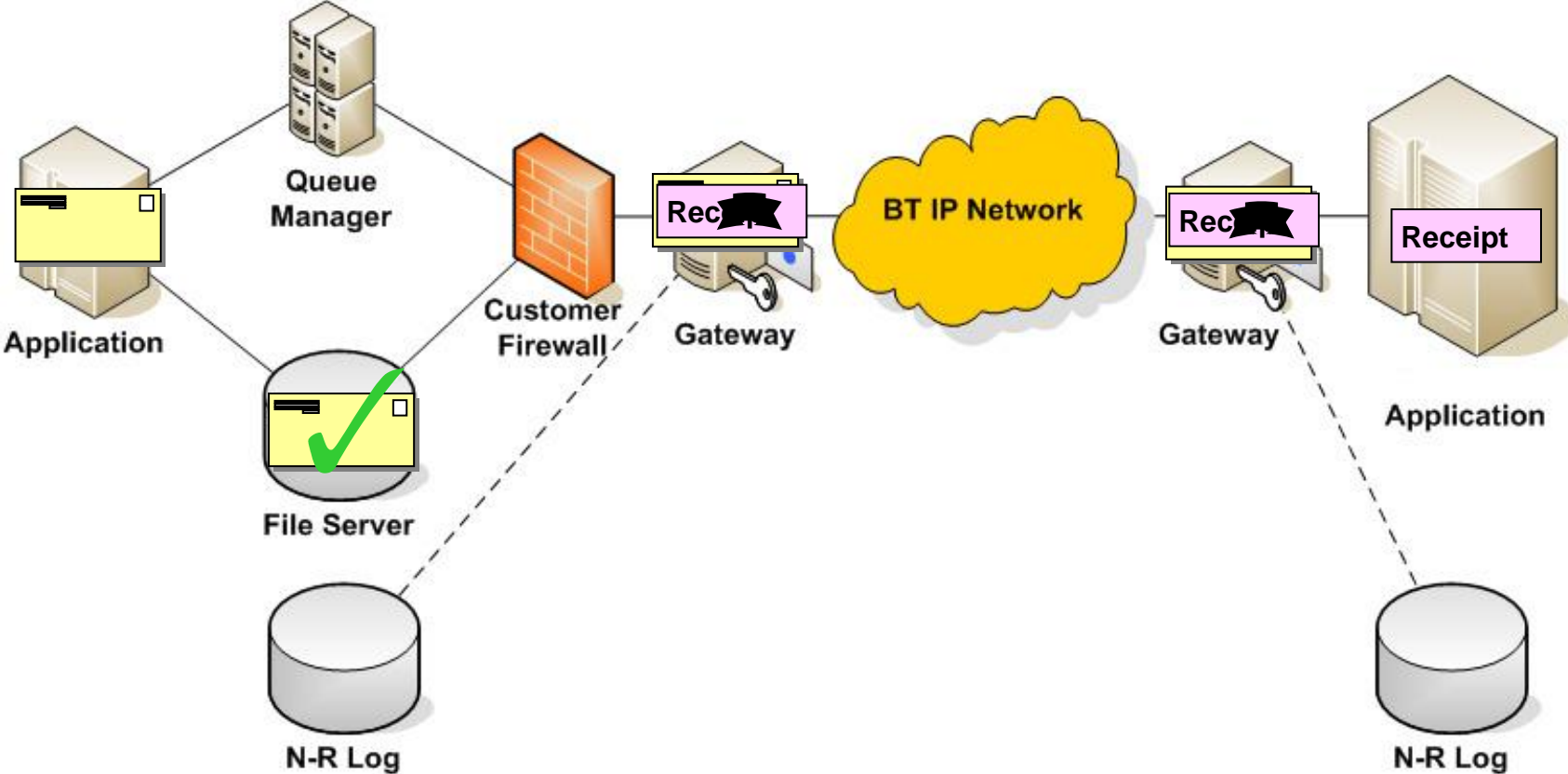
- Document Delivery
 - PKI encryption with digital signatures and audit trails
 - BT as certification authority (CA)
- Secure Mail
 - BT in collaboration with Logica
 - End-to-end encryption of email messages to anyone
 - Message Pickup Centre
- Secure and tamper-proof
- Reliable
- Non-repudiable



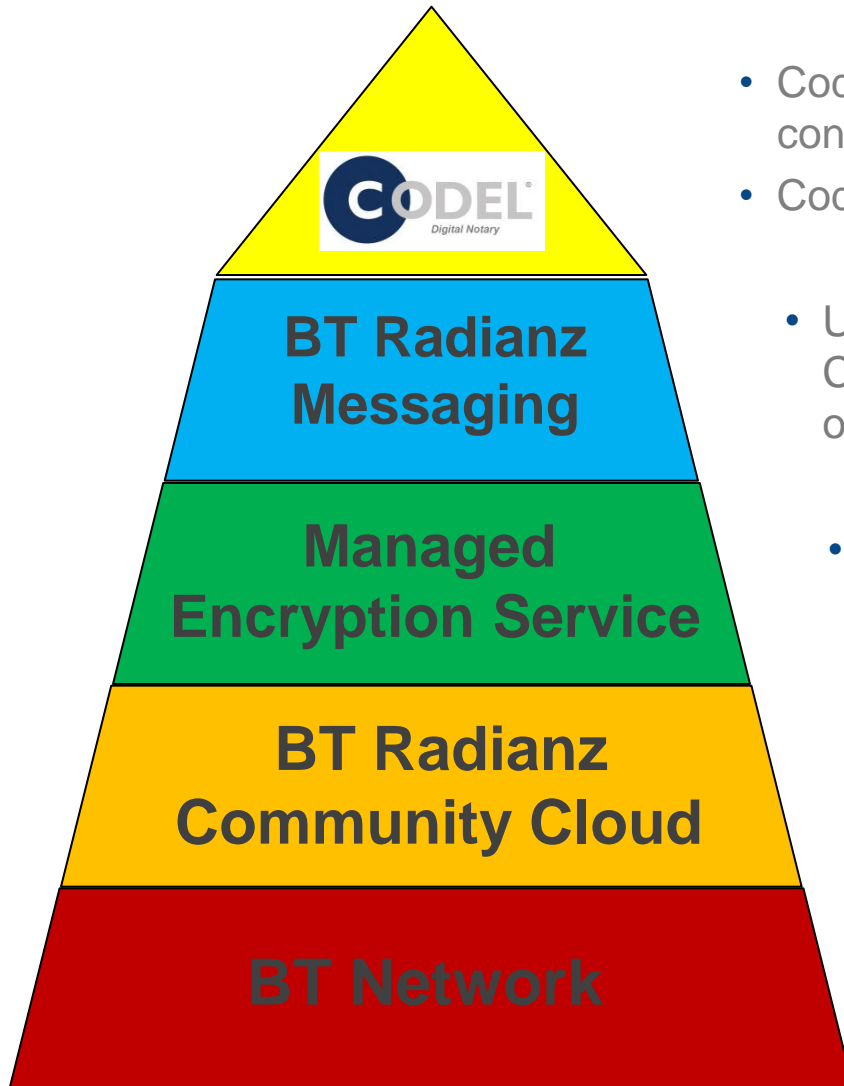
Messaging for STP and cost-efficiency

- For automated message processing – STP (straight-through processing)
- ISO 20022 message formats – plus any other current, past or future format
- Based on 15 years' experience serving the CREST user community
- as well as over 25 years serving the financial community, UK government, US government, etc.

BT Radianz Messaging - Customer Interfaces – File Drop

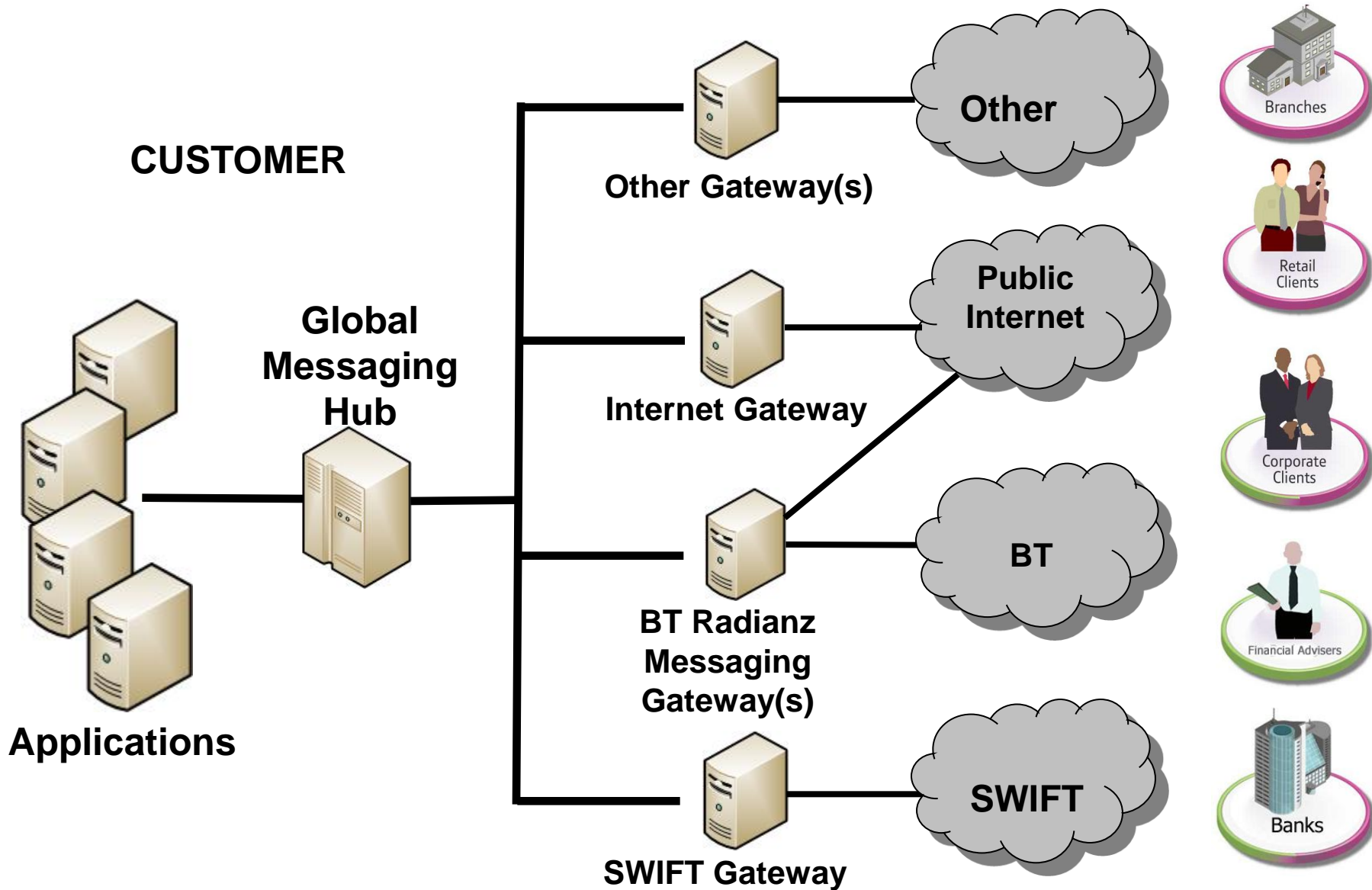


Using the Codel digital notary service in a document exchange architecture



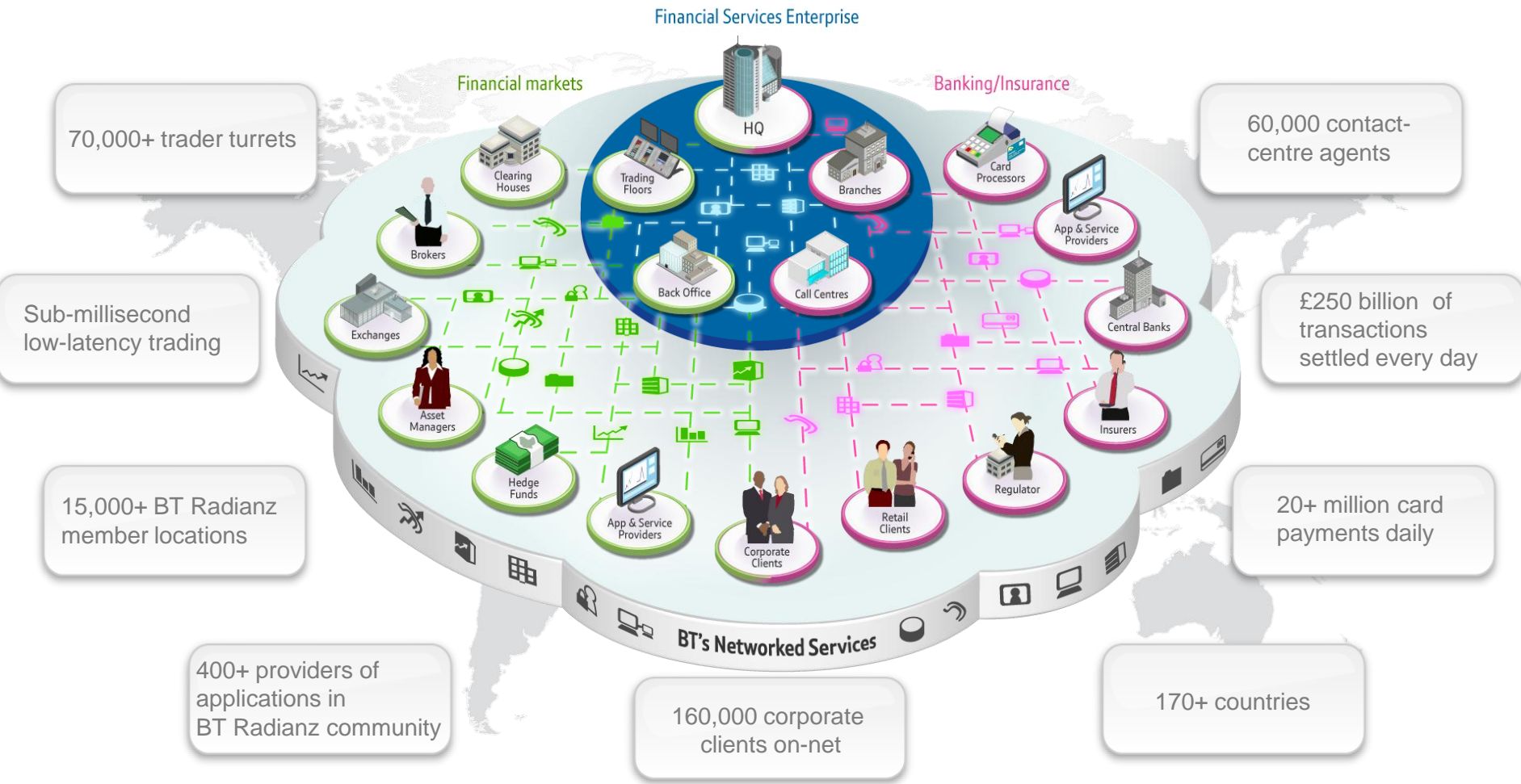
- Codel assures the origin, version and integrity of content
- Codelmarks are verifiable by message recipients
- Using BT Radianz Messaging to deliver Codelmarks assures non-repudiable proof of delivery
- Encrypts the content so that no other party can read it
- Codel is hosted on and accessible across the BT Radianz cloud, and is also accessible across the public Internet
- IP network service available in over 170 countries around the world
- Serving over 160,000 corporate customers

Community-based messaging architecture



BT vision – to network the world’s Financial Community

Getting financial services firms to the marketplace faster, more cost-effectively, globally



- Low-latency Trading
- Market data
- Trader voice
- Proximity Hosting
- Data Centres
- Secure Messaging
- Tiered network Services
- Storage
- Voice
- Video
- Computing
- Hosting
- Directories
- Cardway



BT Global Banking and Financial Markets

Using digital channels to communicate securely with customers

Chris Pickles – chris.pickles@bt.com
Head of Industry Initiatives
19 October 2011