


Corporate Wrap – The Future for Workplace Benefits

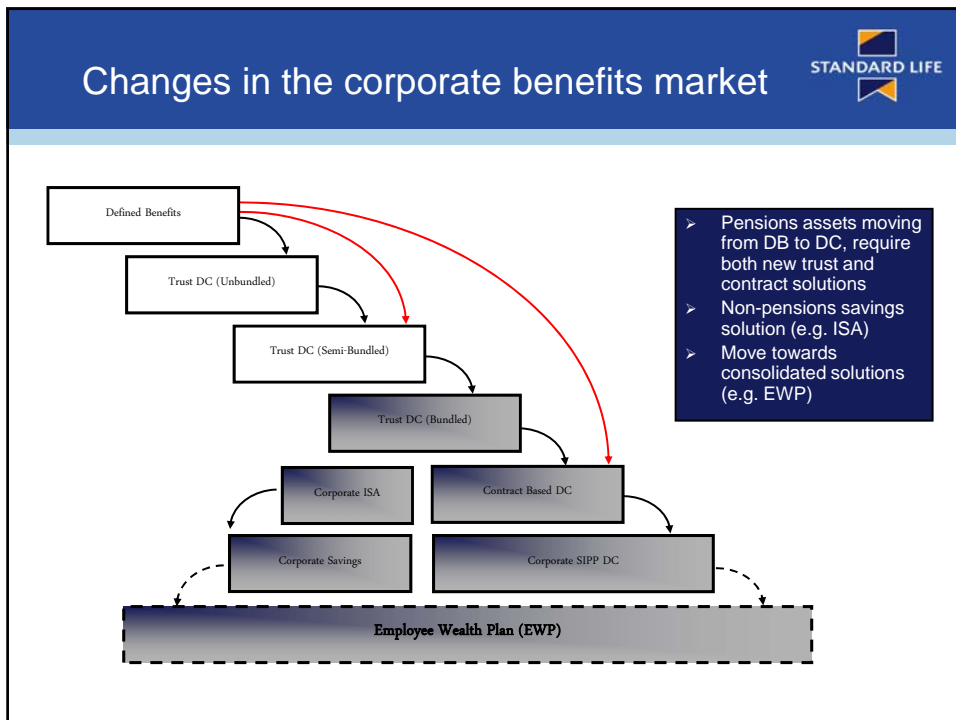


Employee Wealth Plan

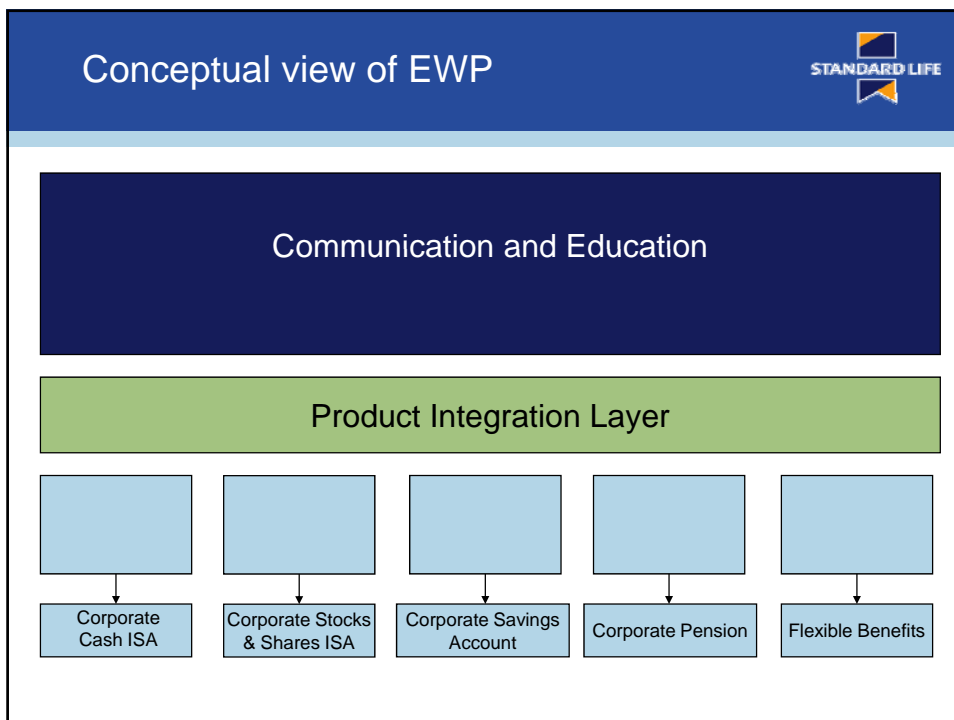
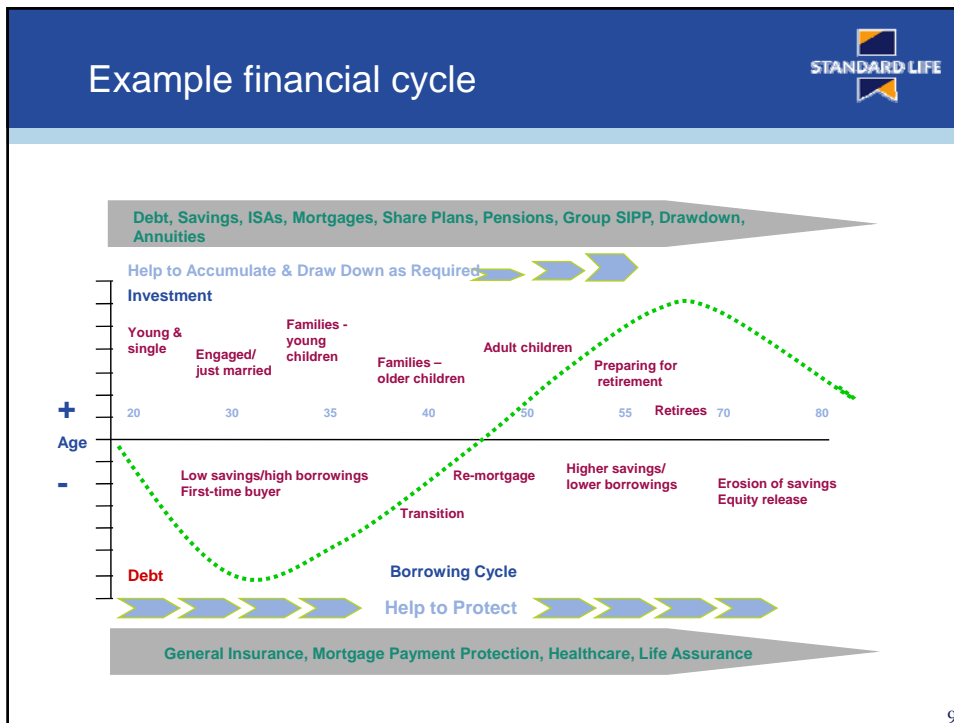
Jamie Jenkins
 Head of Employee Wealth Solutions

1st October 2009


For pensions professionals and those involved in the corporate benefits industry. Not to be relied upon by consumers.
 © 2009 Standard Life, images used with permission



Corporate Wrap – The Future for Workplace Benefits



Corporate Wrap – The Future for Workplace Benefits




Employee Wealth Plan – Client Benefits

Benefits to the Employer

- Access to a wider range of products and services through a single portal
- Ability to enable future components
- Ability to integrate with HR and payroll systems (e.g. to enable auto-enrolment)
- Supports employee communication/education
- More targeted benefit spend/improved engagement
- Employees able to self-service benefits online

Benefits to the Employee

- Secure/easy access
- Consolidated view of all employer-sponsored benefits
- Ability to include other products and asset values
- Educates and helps employees define and achieve their financial goals
- Engaging and easy to use



Standard Life Assurance Limited, registered in Scotland (SC286833)
 Standard Life House, 30 Lothian Road, Edinburgh, EH1 2DH
 Authorised and regulated by the Financial Services Authority.
 0131 225 2552 (*calls may be recorded/monitored*)
www.standardlife.co.uk

© 2009 Standard Life (images reproduced under licence).

12